



# Alma Castro, Ed.D.

**Directora de Multilingual California  
Project (MCAP)**

**California Association for Bilingual  
Education (CABE) alma@gocabe.org**

**Website:** [www.multilingualcalifornia.org](http://www.multilingualcalifornia.org)

**Email:** [mcapalliance@gmail.org](mailto:mcapalliance@gmail.org)

**Facebook:** Multilingual California Project  
Alliance

**Instagram:** @mcapalliance

**Twitter:** @mcapalliance





# Classroom to Credential: The Butte County Pathway (Session 2)



Holly Harding, Diana Gomez, Josephino  
Gonzalez, Guillermo Castillo,  
Jaqueline Garcia, Ana Barron & Karla López

**Butte County Office of Education**



# Who is the Multilingual California Alliance?



# M<sup>CA</sup>P Purpose

The Multilingual California Project (M<sup>CA</sup>P) builds on a robust body of research documenting multilingualism as the most effective option for the academic achievement of ELs across all content areas and for preparation to participate effectively in the global workforce.

## Principle 1

### • Assets-Oriented and Needs-Responsive Schools

Pre-schools and schools are responsive to different **EL strengths, needs, and identities** and support the socio-emotional health and development of English learners. Programs value and build upon the **cultural and linguistic** assets students bring to their education in safe and affirming school climates. Educators value and build strong family, community, and school partnerships.

## Principle 2

- **Intellectual Quality of Instruction and Meaningful Access**  
English learners engage in intellectually rich, developmentally appropriate learning experiences that foster high levels of **English proficiency**. These experiences integrate language development, literacy, and content learning as well as provide access for comprehension and participation through **native language instruction** and scaffolding. English learners have meaningful access to a full standards-based and relevant curriculum and the opportunity to develop proficiency in English and **other languages**.

## Principle 3

- **System Conditions that Support Effectiveness**  
Each level of the school system (state, county, district, school, pre-school) has leaders and educators who are knowledgeable of and responsive to the **strengths and needs of English learners** and their communities and who utilize valid assessment and other data systems that inform instruction and continuous improvement. Each level of the school system provides resources and tiered support to ensure strong programs and build the capacity of teachers and staff to leverage the **strengths and meet the needs of English learners**.

## Principle 4

- **Alignment and Articulation Within and Across Systems**  
English learners experience a coherent, articulated, and aligned set of practices and pathways across grade levels and educational segments, beginning with a strong foundation in early childhood and appropriate identification of strengths and needs, and continuing through to reclassification, graduation, and higher education. These pathways foster the skills, **language(s)**, literacy, and knowledge students need for college- and career-readiness and participation in a **global, diverse, multilingual, twenty-first century world**.



# MCAP Goals

1. **Build capacity among school leaders to implement the EL Roadmap Policy & culturally and linguistically responsive practices.**
2. **Support implementation of instructional practices** that effectively develop academic content knowledge, discipline-specific practices, academic language, and multilingual and multiliterate proficiency.
3. **Create a multilingual collaborative state-wide network of experts to guide systems** that support the development of effective cross-curricular, disciplinary-based instructional practices for all English Learners.
4. **Identify and emphasizing high-quality models for professional development** regarding the EL Roadmap Policy.
5. **Support the implementation, alignment, and articulation of the EL Roadmap Policy across and within school district systems.**



# OUR TEAM



**Guillermo Castillo**  
*Director*



**Diana Gomez**  
*Associate Director*



**Josephino Gonzalez**  
*Lead Instructor*



**Holly Harding**  
*EL Administrator/Title  
III Regional Specialist*



**Isandre Alanis**  
*Program Coordinator*



**Ana Barron**  
*STEM Instructor &*



**Jonathan Ramirez**  
*STEM Instructor & Advisor*



**Jaqueline Garcia**  
*Education Specialist*



**Karla Lopez**  
*Education Specialist*



# FES Advisors



***Helen Garcia***  
CEG Advisor



***Diana Munoz***  
CEG Advisor



***Veronica Alvarez***  
CEG Advisor



***Sabina Alvarez***  
SDCOE Advisor



***Luis Martinez***  
FES Advisor



# FES Team



# Webinar Reminders

- Chat- We invite you to engage with us via the chat feature in Zoom. You may ask us questions or make comments on what resonates with you. Also, please access the many links that we will be putting in the chat along the way.



- Polls- We plan to publish two polls during our webinar. These two polls will pop up on your screen. Please contribute your answers by responding to the poll in a timely manner so that we may publish the results.



- Survey- At the end of the presentation we will be asking you to complete two different surveys. We will put the links to the surveys in the chat box. Please respond to the survey so that we can continue to offer programs and services that meet your needs.



## Slide 9

---

1

Change Slide to include:

-- Poll

---Invite participant to stay at the end to complete the MCAP survey & FES survey.

Ana Barron Viana, 2/23/2021

1

@amviana@bcoe.org Can you change the symbols on the left of this slide to include a "poll" image and a "chat" image?

Holly Harding, 2/23/2021

# Session #1 Review

- Challenges faced by paraeducators
  - Barriers to typical credential programs and how you can overcome these challenges with our support
  - Overview of our programs and services
  - FES can support you in your pathway to a bilingual credential
- 
- If you did not join us last time, please view our session recording here: <https://mcap.gocabe.org/video-archives/>



# Goals for Today's Webinar

Participants will get more information on:

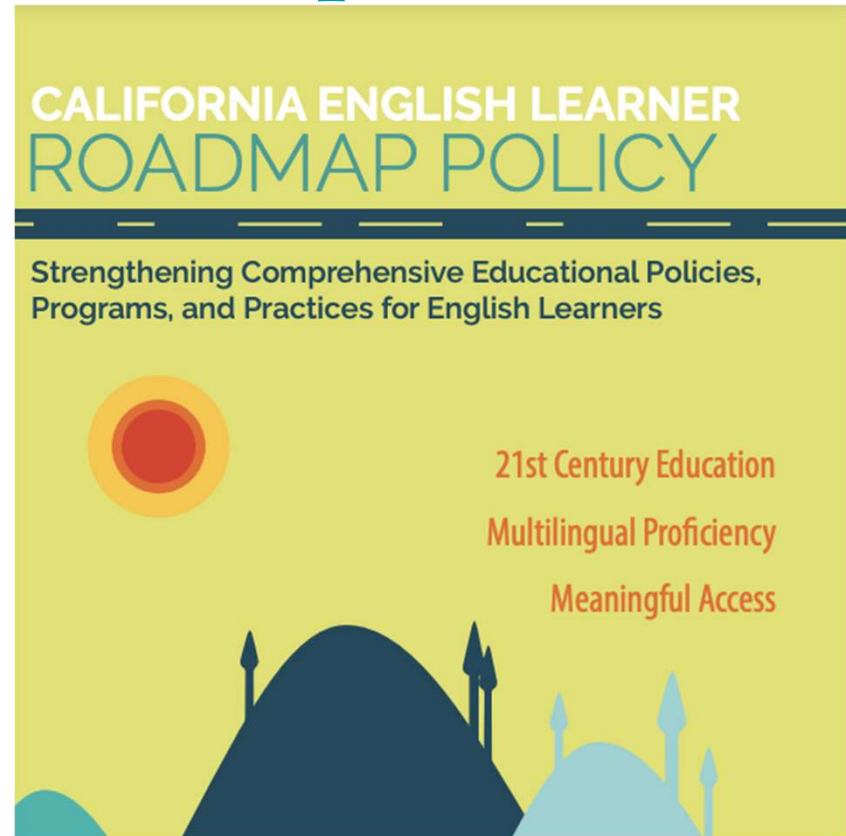
- Different Pathways to the Credential
- Financial Support Options
- Required Exams
- Q&A



Principle 1- EL students as assets; school climates and campuses are affirming, inclusive and safe

Principle 3- recruitment and development of a pipeline of educators, including bilingual teachers

## California EL Roadmap



# Future Educator Support

- Future Educator Support (FES), is a program of Butte County Office of Education that partners with California colleges, Local Educational Agencies, and Migrant Education programs throughout the state in providing programs and services.
- FES addresses the needs of supplemental services for our K-12 migratory students and our post-secondary working adult aspiring educator population in the state of California.



# What can we offer?

## Future Educator Support:

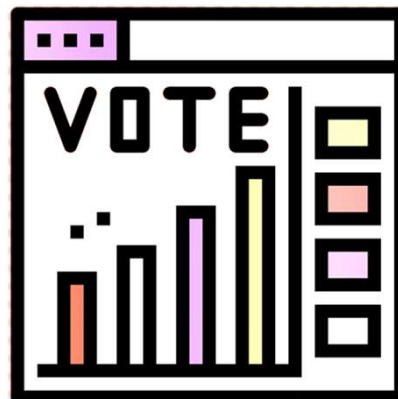
- Provides guidance and assistance to aspiring teacher candidates
- Provides Individualized Pathway Plan
- Offers CBEST, CSET, and RICA support
- Supports with Teacher Performance Assessments (Cal TPA)
- Academic advising and mentoring
- Professional development
- Participate in the FES Teach Grant



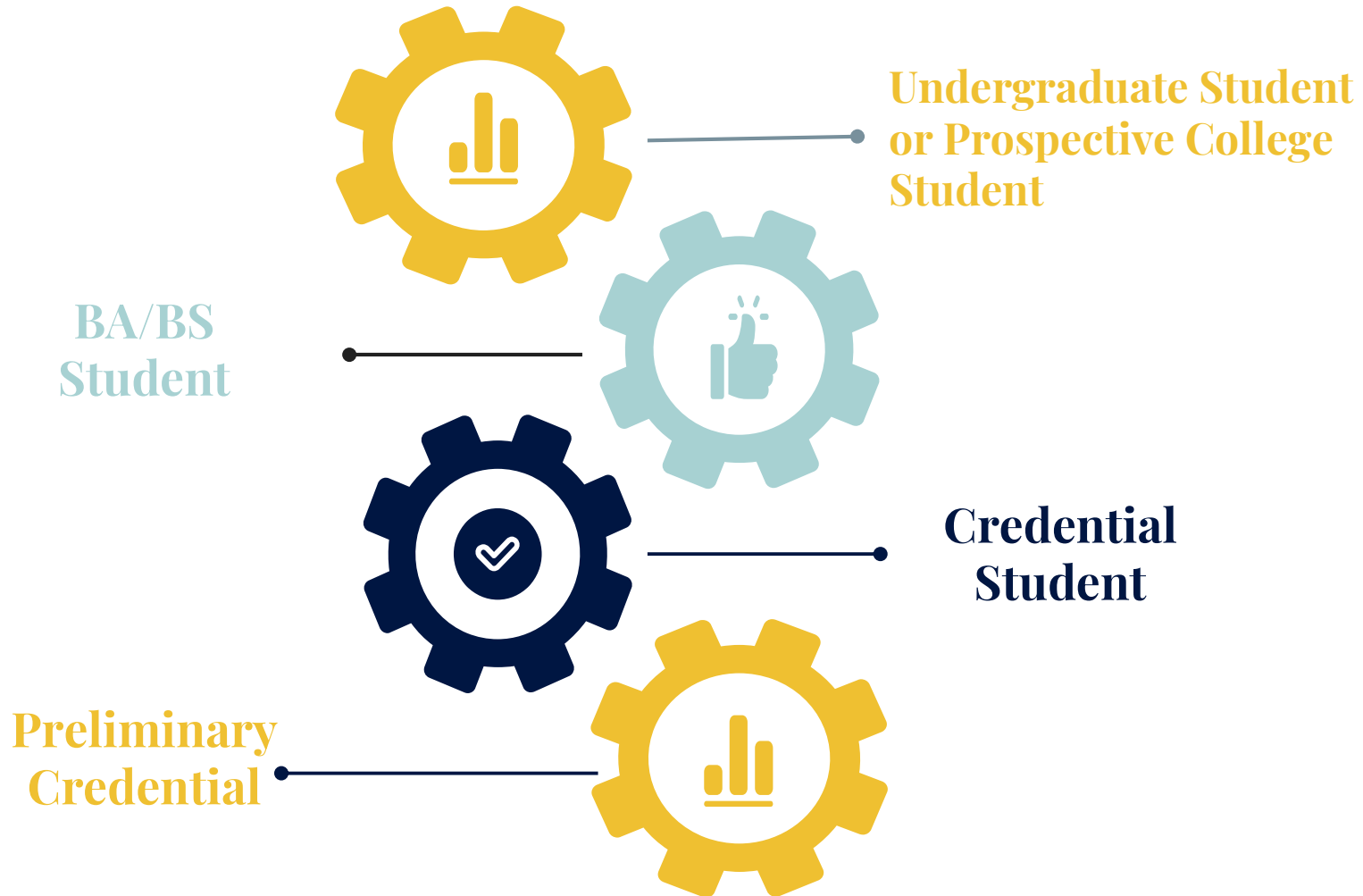
# Teacher Pathway Poll

What is your current educational status?

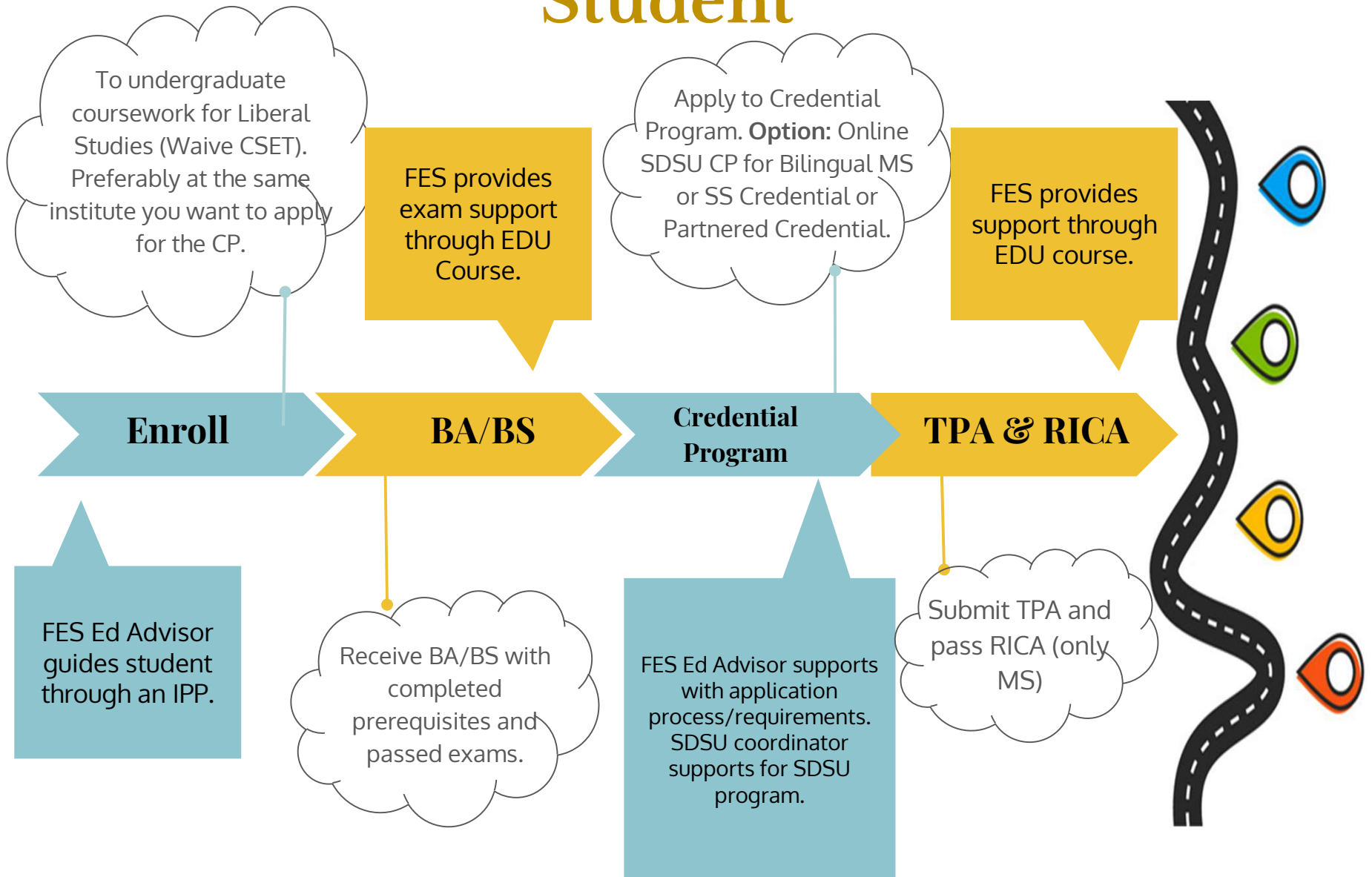
- ☐ Prospective College Student- No college experience
- ☐ Undergraduate (60 units)- No degree
- ☐ Bachelor's Degree
- ☐ Credential Program- I am currently in a credential program



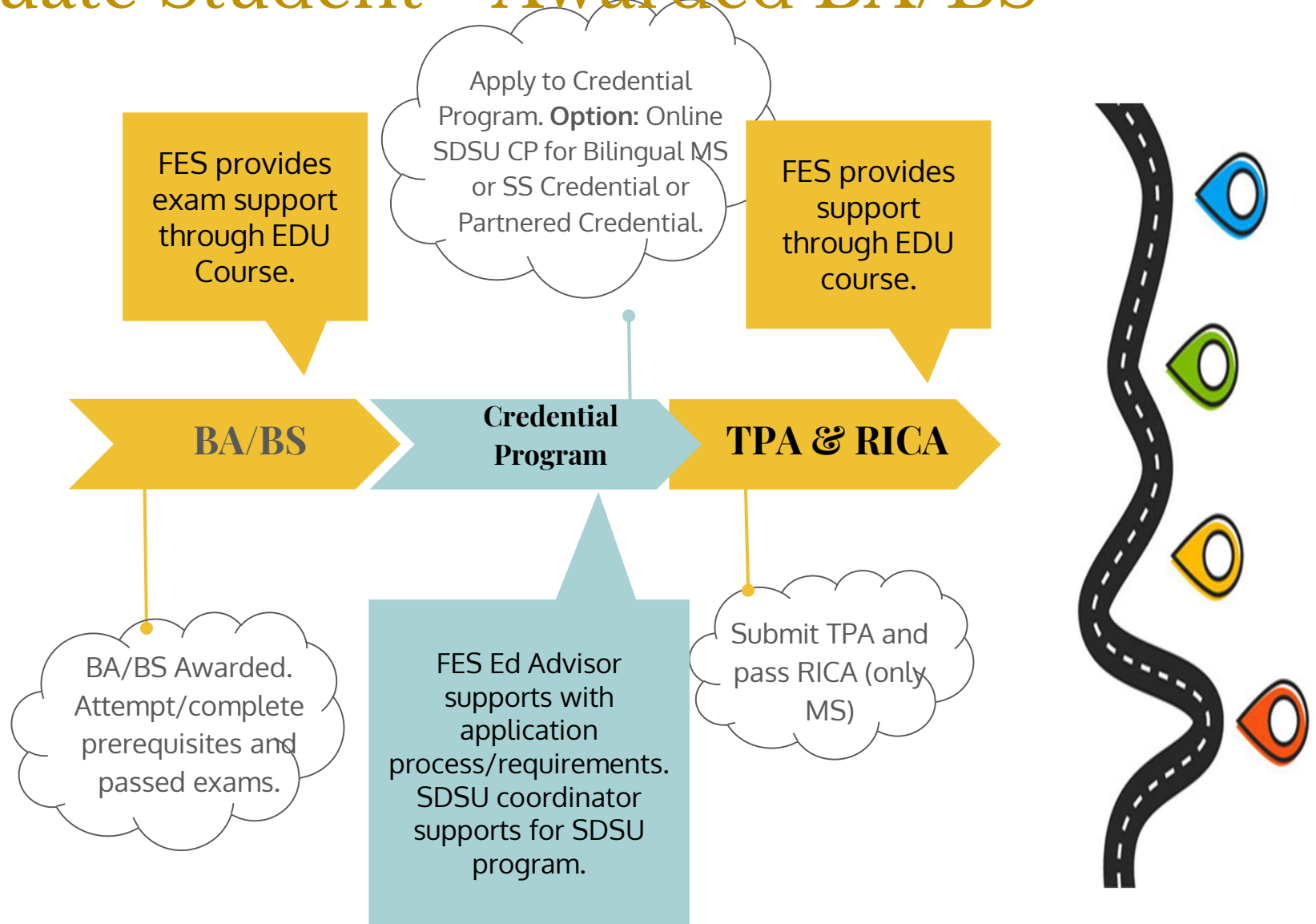
# Differentiated Teacher Pathways



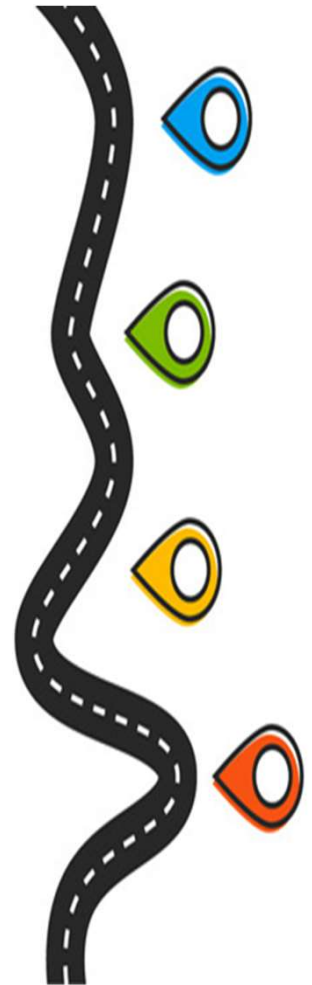
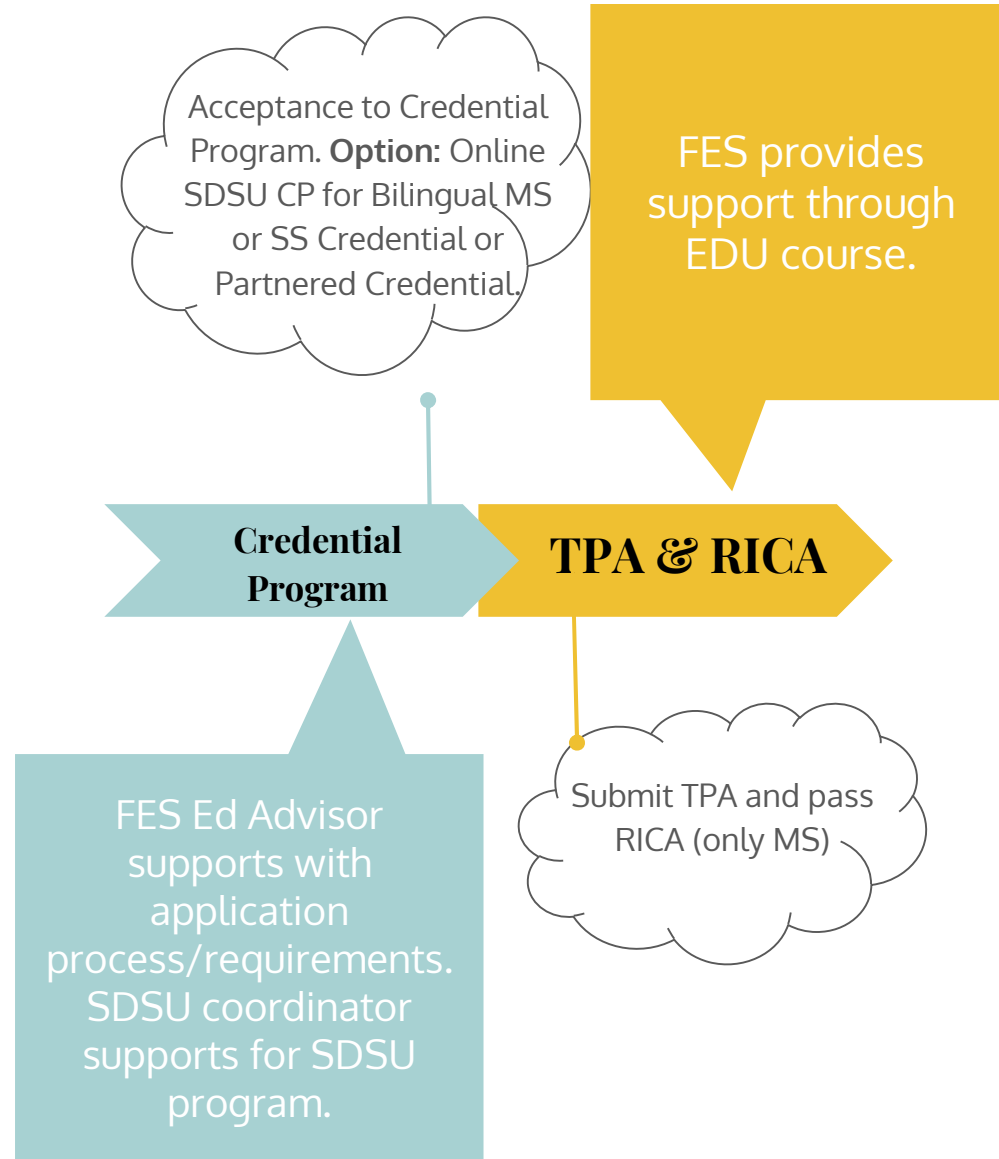
# Undergraduate or Prospective College Student



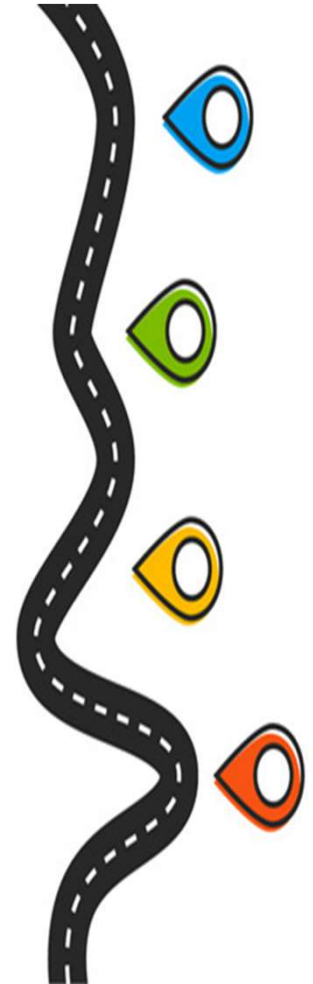
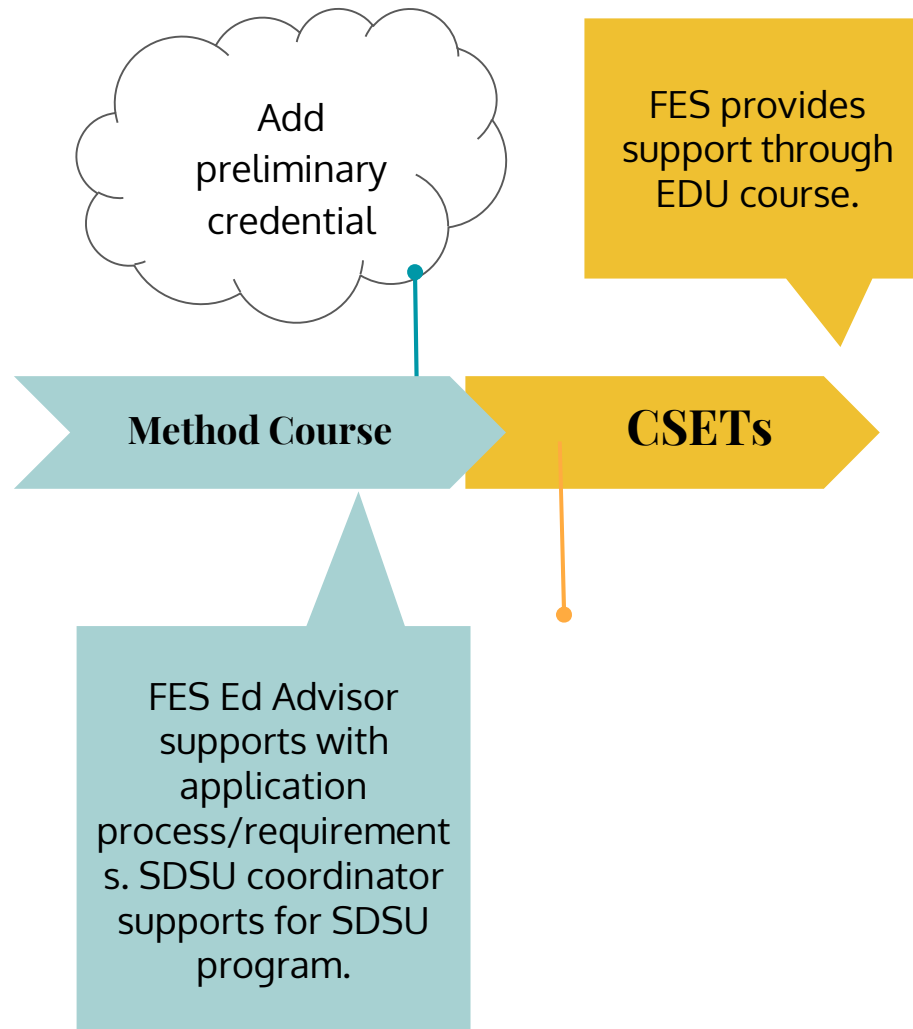
# Graduate Student - Awarded BA/BS



# Credential Student



# Preliminary Credential



# Credential Program Overview

How do I select a college/university?

It can take from 1.5 to 2 years depending on type of teaching credential.

When does the program begin?

How do I decide which Credential Program to attend?

Consider:

- Location
- Online vs Face to Face
- Private or Public Institution
- Cost \$\$

How long will the program be? (duration)

Start time varies by institutions, but in general private institutions have multiple start dates & public institutions usually start in the Fall terms

# Credential Program Overview

## Apply to Credential Program

### What do I need to know?

- Application Deadline

### Pre-Requisites

- BA/BS
- Prerequisite Courses
- Exams
  - CBEST
  - CSET (If applicable by program)

## Credential Program

### What does it look like?

- Credential coursework
- Fieldwork experience (based on credential program)
  - Intern Model (You are the Teacher of Record)
  - Student Teaching - (You have a Supervisor Teacher)
- Complete CalTPA & RICA (If applicable by program)

### What's next after completing a credential program?

- Apply for preliminary credential
- Be hired as the teacher of record in the credential you are authorized to teach.
  - You have 5 years to clear your credential by completing an Induction Program.
    - Induction program can be completed after the second year of working for a district.

# What Financial Aid Application do I complete?

Apply only ONE application based on your eligibility.



# Financial Aid

**FAFSA Link:** <https://studentaid.gov/h/apply-for-aid/fafsa>

- The U.S. Department of Education's office of Federal Student Aid provides more than \$120 billion in financial aid to help pay for college or career school each year.

## How to Apply:

- Complete FAFSA application
- Most students qualify for additional funding to cover Credential Program
- Based on your income tax information from 2 years ago
- Offers grants, student loans, and scholarships



# Financial Aid

**Dream Act Link:** <https://dream.csac.ca.gov/>

- Allows students interested in attending eligible California Colleges, Universities, and Career Education Programs to apply to state financial aid.

## How to Apply:

- Complete Dream Act application
- Based on your income tax information from 2 years ago
- Offers grants, student loans, and scholarships



# Additional Financial Aid Support

**TEACH**  
Grant

**Project  
ACCESS**  
Grant

**FES  
TEACH**  
Grant



# FAFSA TEACH Grant

**TEACH Grant:** <https://studentaid.gov/understand-aid/types/grants/teach>

- The TEACH Grant Program provides grants of up to \$4,000 a year to students who are completing or plan to complete coursework needed to begin a career in teaching.

## Who can get a TEACH Grant?

- Meet the [basic eligibility criteria for the federal student aid programs](#).
- Complete the [Free Application for Federal Student Aid \(FAFSA®\) form](#).
- Be enrolled as an undergraduate, postbaccalaureate, or graduate student at a school that participates in the TEACH Grant Program.
- Be enrolled in a TEACH-Grant-eligible program.
- Meet certain academic achievement requirements
- Receive [TEACH Grant counseling](#) that explains the terms and conditions of the TEACH Grant [service obligation](#). You must complete counseling each year that you receive a TEACH Grant.
- Sign a *TEACH Grant Agreement to Serve*.

Note: If you do not meet the requirements of your service obligation, all TEACH Grants you received will be converted to Direct Unsubsidized Loans. You must repay these loans in full, with interest charged from the date of each TEACH Grant disbursement.





# Project ACCESS Grant

- ❖ **Partnership**
- ❖ **2021-2025**
- ❖ **Address needs of**
  - rural communities
  - first generation college students
  - second language learners
- ❖ **Potential Interns**
  - Must be teacher of record in k-12 setting
  - Must apply to SDSU Credential Program for Fall 2021
- ❖ **Offers:**
  - Technology Pack (Computer & Wi-Fi Hotspot)
  - Educational Coursework
    - Professional Development
  - School Supplies (sticky notes, pen, highlighter, and a calendar/planner)
  - Reimbursement up to \$4,000
  - Peer Mentoring and Advising
  - Access to SDSU Credential Program

For more information on the grant visit our website: [Link](#)





# FES TEACH Grant



- ❖ **Program of Butte County Office of Education**

- 2021

- ❖ **Aspiring Teacher Candidates**

- ❖ **Address needs of**

- First generation college students
  - Second language learners
  - Rural Communities
  - Bilingual education

- ❖ **Offers:**

- Educational Coursework
  - Professional Development
  - Reimbursement up to \$500
  - Peer Mentoring and Advising
  - Access to SDSU Credential Program

For more information on the grant visit our website: [Link](#)



# California Credential Assessments

California  
Basic  
Education  
Skills  
Test

California  
Subject  
Examination  
for  
Teachers

Reading  
Instruction  
Competence  
Assessment

California  
Teaching  
Performance  
Assessment



**CALIFORNIA**  
Educator Credentialing Assessments

[View Cart](#) | [My Account](#) | [Contact Us](#)

[Home](#)

[Assessments](#)

[Prepare](#)

[Register](#)

[Get Results](#)

[Policies](#)

[Find Info](#)



# CBEST

## Who takes the exam:

- Individuals obtaining a teaching credential in California

## What is the format of the exam?

- Paper & computer based test:
  - Reading (50 multiple-choice questions)
  - Mathematics (50 multiple-choice questions)
  - Writing (2 essays)

## What is the length of the exam?

- 4 hours for 1, 2, or all 3 sections

For exam registration and more information please visit:

[https://www.ctcexams.nesinc.com/PageView.aspx?f=GEN\\_AboutCBEST.html](https://www.ctcexams.nesinc.com/PageView.aspx?f=GEN_AboutCBEST.html)



# CSET

## Who takes the exam:

- Individuals who are obtaining a teaching credential:
  - Single Subject
  - Multiple Subject
  - \*Some Special Education
- *Note: Exam might be waived if recently graduated from a university that has waiver.*

## What is the structure of the exam?

- Computer-based test (CBT) only:
  - Multiple-choice questions and constructed-response questions
  - CSET can have 3 or 4 subtest, it depends on credential obtaining

## What is the length of the exam?

- 2 to 3 hours depends on the CSET and subtest

For exam registration and more information please visit:

[http://www.ctcexams.nesinc.com/PageView.aspx?f=GEN\\_Tests.html](http://www.ctcexams.nesinc.com/PageView.aspx?f=GEN_Tests.html)



# RICA

## Who takes the exam:

- Individuals obtaining a credential in:
  - Multiple Subject credential
  - Some Special Education programs

## What is the format of the exam?

- Computer-based test (CBT) only:
  - 70 multiple-choice questions
  - 4 focused educational problems and instructional tasks
  - 1 case study

## What is the length of the exam?

- 4 hours all components of exam

For exam registration and more information please visit:

[http://www.ctcexams.nesinc.com/TestView.aspx?f=HTML\\_FRAG/CA\\_RICA\\_Written\\_TestPage.html](http://www.ctcexams.nesinc.com/TestView.aspx?f=HTML_FRAG/CA_RICA_Written_TestPage.html)



# CalTPA

## Who takes the assessment:

- Individuals obtaining a credential in:
  - Single Subject
  - Multiples Subject
  - \*Some Special Education

## What is the structure of the assessment?

- Performance assessment consisting of two instructional cycles:
  - Instructional Cycle 1: Learning About Students and Planning Instruction
  - Instructional Cycle 2: Assessment-Driven Instruction

## What is the length of assessment?

- Candidates should submit their cycle(s) based on due dates established by their preparation program or certification requirements.

For exam registration and more information please visit:

[http://www.ctcexams.nesinc.com/TestView.aspx?f=HTML\\_FRAG/CalTPA\\_TestPage.html](http://www.ctcexams.nesinc.com/TestView.aspx?f=HTML_FRAG/CalTPA_TestPage.html)



# Credential Program Assessment

## Before Credential Program

- *CBEST: California Basic Educational Skills Test*
  - Required by all credentials
  - \*\*Note: Exam can be waived based on ACT/SAT/AP Courses/ EAP - [LINK](#)
- *CSET: California Subject Examination for Teachers*
  - Required by Single Subject & Multiples Subject Credentials
  - \*\*Required by some Special Education Credentials
  - \*\*Exam can be waived based if you can show competence via BA/BS

## During/After Credential Program

- *RICA: Reading Instruction Competence Assessment*
  - Required by Multiple Subject
  - \*\*Required by some Special Education Credentials
- *CalTPA: California Teaching Performance Assessment*
  - Required by Single Subject & Multiples Subject Credentials
  - \*\*Required by some Special Education Credentials



# Exam Registration

- **Need to create an account to be able to register for the exam.**
  - Make sure to save your login credentials.
  - Use a reliable and secure email address as exam scores will be sent to it.
  - Provide your full name and correct social security number.

**Create an Account:**  
**[www.ctcexams.nesinc.com](http://www.ctcexams.nesinc.com)**

## Account Information

Please provide the following information to create your account.

Email Address:

Confirm Email:

Password:

Your password must be between 6 and 30 characters and must contain at least one letter and one digit and cannot contain spaces nor any of the characters "&" "<" ">" "[" "]" "-"

Confirm Password:

Security Question:

Security Answer:

Your answer to your security question must be between 4 and 128 characters.

Next

# Exam Locations

## To schedule or reschedule a test appointment:

- We encourage you to check for test center availability prior to registration by using the seat availability tool
  - Test centers that are open will appear in the seat availability tool and during the scheduling process.

## Check Seat Availability:

- <http://www.ctcexams.nesinc.com/>
  - 1. Select Exam
  - 2. Identify City



# Registrations & Location Tips!

- **Registration:**
  - If you have exam anxiety, register for **ONE** CBEST section or CSET subtest at a time!
  - Make sure you create an account and use full name (as shown on ID) and correct social security number.
- **Location:**
  - Use the [seat availability tool](#)
  - Widen your location search to maximize availability
  - Check in a weekly basis for earlier exam dates.
- **Preparation:**
  - Use calendar to plan out your test date
  - Use multiple resources to prepare for the exam
  - Review the test structure and content to ensure you cover all/most aspect of the exam.



# Frequently Asked Qs

- Can I apply to a credential program with a BA/BS from another country?
- Does the support accommodate working adults?
- How do I get started with support towards getting my credential?
- What does the support look like?
- Do you offer a teaching credential?
- How can I pay for the credential courses?
- Can I participate in the program even though I do not qualify for financial aid?





# San Diego State University

## Department of Dual Language & English Learner



- 2018 Partnership with SDSU DLE & BCOE
  - This partnership was developed to target classified staff who want to pursue a teaching credential.
- Fully online credential program
- Affordable credential program at CSU cost
- Student Teaching at their current work site
- Full time (2 semesters) & Part time (4 semesters) available

***You can still apply to start Fall 2021!***

- Please join our SDSU Application Workshop Saturday, March 13 @ 11: 00 AM.



# How can we help?



**Classroom to Credential:  
The Butte County Pathway**

## MCAP Paraeducators - Q & A

What do you need more information about?

Your answer

What can we present in our next session that will support you?

Your answer

**Submit**

Never submit passwords through Google Forms.

This form was created inside of Butte County Office of Education. [Report Abuse](#)

Google Forms

- Complete:  
[MCAP](#)  
[Statewide](#)  
[Paraeducators](#)  
[Survey](#)





# Next Steps

1. Respond to the survey so we can get in contact with you.
2. Complete the FES Teach Grant Application
3. Complete Feather River College Application
4. Schedule a meeting with FES Advisor

# THANK YOU!





# Key Reminders

1. For more information please contact: [fes@bcoe.org](mailto:fes@bcoe.org)
2. If your district is a part of the MCAP Alliance, please join us for our Innovation sessions starting March 18, 2021.
3. Please complete the Participation Survey. The link is provided in the Chat box.

## THANK YOU!



Home About MCAP EL Roadmap GoCABE Calendar

SUBSCRIBE FOR UPDATES

EVENTS

Traduzca esta página:  
Select Language  
Powered by Google Translate

 **MULTILINGUAL CALIFORNIA** 

Building the Pathway to Multilingualism along the EL Roadmap Policy



What is Multilingual California?	Social Media Campaigns	EL Roadmap in Action	Multilingual Language Services
County District Partners	Data on Multilingualism	Seal of Bilingualty	Become a Bilingual Teacher
Learning Continuity Plan	Dual Language Resources	View Past Webinar Recordings	

★ UPCOMING EVENTS ★






# Join our MCAP Social Media Movement



@mcapalliance



Multilingual California Project Alliance



@mcapalliance



MultilingualCalifornia.org



mcapalliance@gmail.com

